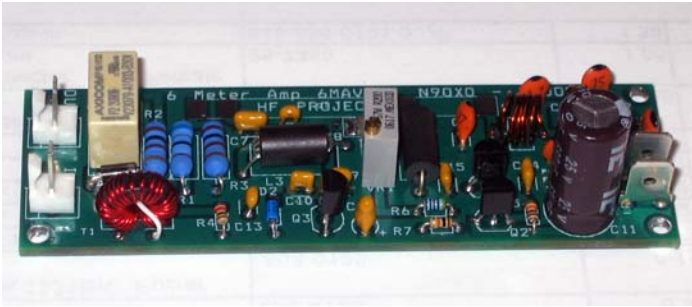


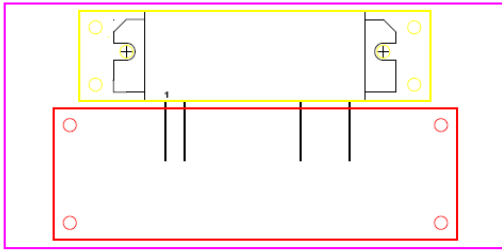
HF PROJECTS

VHF PACKER 6 METER 30W AMP PROJECT



Circuit board used in the 30W
VHF PACKER 6 METER AMP

Build your own VHF Packer 6M
Amp



SIGNUP LIST: vstamps@comcast.net or
281 467-9424 Call sign, email requested

MITSUBISHI RF MOSFET MODULE
mounted on a heat sink. The RA30H0608M is a
30-watt RF MOSFET Amplifier Module for 12.5-volt
mobile radios that operate in the 66- to 88-MHz range.
SSB, CW and FM Operation on 6M.

VHF PACKER 6M Amp Features

- All Parts, Circuit Board, Case and Heat Sink
- 50 ohm resistive pi network input, 1W drive ; 30W Output
- Filtered Anderson Power Pole DC Input: 12VDC 6.2A
- Low Pass Filter on-board; Filtered RF Input and RF Output
- Bypass / Operate Switch with TX LED
- COR – Carrier Operated Relay
- Size: 5.25 x 3 x 3; Weight: less than 1 lb
- Drill templates for case fabrication
- Construction manual on CD



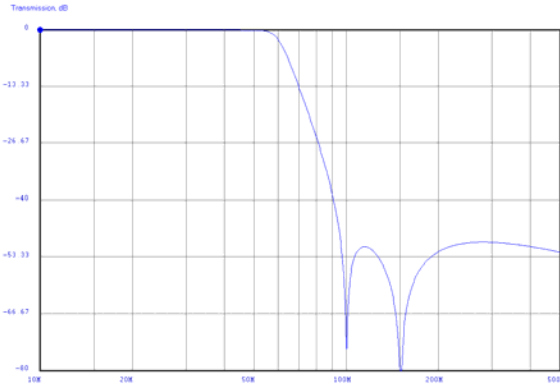
Power Switch, TX, Bypass/Operate Switch



DC Input; RF In; RF Out

HF PROJECTS

VHF PACKER 6 METER 30W AMP PROJECT



| Price Matrix for the VHF PACKER 6M 30W AMP | | | | | | | | | | | | |
|--|-----------------------|-----------------|------------|-------------|------------------|----------------|------------|---------------|---------------------|-------------|-------------------|-------|
| Model | Circuit Board w/Parts | Blank Heat Sink | Blank Case | Cable Parts | Cables Assembled | Switches & LED | AMP Module | Finished Case | Drill/Tap Heat Sink | Assy & Test | Fan w/ctrl module | Price |
| 1 | X | X | X | X | | X | X | | | | | 239 |
| 2 | X | | | | X | X | X | X | X | | | 359 |
| 3 | X | X | X | | | | X | | | | | 189 |
| 4 | X | | | | | | X | | | | | 124 |
| 5 | X | | | | X | X | X | X | X | X | | 399 |
| 6 | | X | | | | | | | | | | 10 |
| 7 | | | X | | | | | | | | | 20 |
| 8 | | | | X | | | | | | | | 10 |
| 9 | | | | | X | | | | | | | 30 |
| 10 | | | | | | X | | | | | | 5 |
| 11 | | | | | | | X | | | | | 75 |
| 12 | | | | | | | | X | | | | 40 |
| 13 | | | | | | | | | X | | | 34 |
| 14 | X | | | | | | | | | | | 49 |
| 15 | | | | | | | | | | | X | 42 |

Models 1-5 and 15 include Construction Manual on CD. Drill Templates included

Choose a model (1-5) best suited to your skill level.

Join the growing signup list. All we need is your email, call sign and shipping address.

More information: http://site.hfprojectsyahoo.com/vhf_packer_6m_amp

Order now: <http://www.hfprojectsyahoo.com/amps.html>